

REPLACEING CD MECH YL2F-19C821

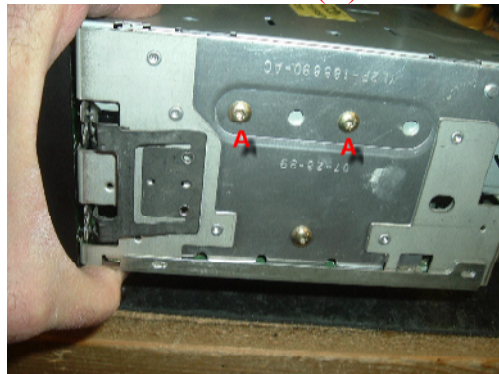
TO REMOVE THE RADIO YOU WILL NEED A SET OF RADIO REMOVAL TOOLS, THE ONES BELOW OR MADE BY SCOSCHE PART NUMBER DT1 AND SOLD AT WAL-MART FOR ABOUT \$5.00



REMOVE THE RADIO



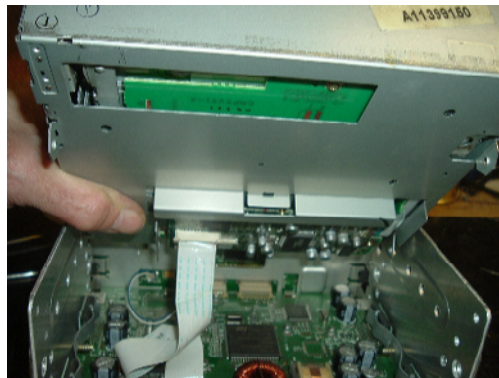
REMOVE 2 SCREWS ON THE LEFT SIDE (A) ALL SCREWS OR T-15 TORX



REMOVE 2 SCREWS FROM RIGHT SIDE (B)



LIFT MECH OUT FROM THE REAR



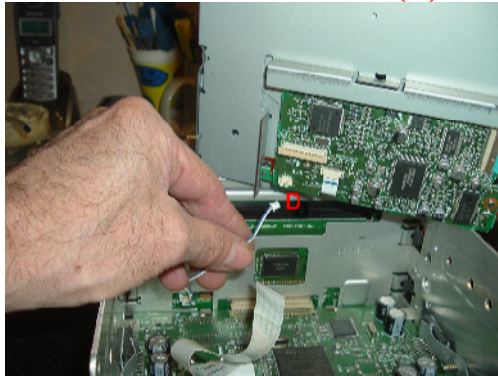
RELEASE LOCKING TAB ON RIBBON CABLE CONECTOR (C)



REMOVE RIBBON CABLE FROM MECH



REMOVE 2 PIN PLUG (D)



**REINSTALL NEW MECH IN REVERSE ORDER
MAKE SURE RIBBON CABLE IS SEATED ALL THE WAY IN THE
CONECTOR AND THE LOCKING TAB IS PUSH ALL THE WAY IN**